

ECVCP Mystery Case 2021

A case of hepatic lesion in a Scorpion Mud Turtle (*Kinosternon scorpioides*)

Contributors

Marta Attini¹, Gabriele Ghisleni², Raffaella Capitelli³, Matteo Federico Sommer⁴, Nicola Pussini⁴

¹ BiEsseA S.R.L. Laboratorio analisi veterinarie per animali da compagnia e da reddito, Milan, Italy

² Consultant Clinical Pathologist, Morbio Inferiore, Switzerland.

³ CSV-Labvet, Missaglia, Italy.

⁴ Staff Veterinarian Acquario di Genova, Genova, Italy.

Signalment

20-year-old, female Scorpion Mud Turtle (*Kinosternon scorpioides*) in an aquarium.

Specimens

- Impression smear cytology of liver.
- Histopathology of an incisional biopsy of hepatic lesion.

History and postmortem examination

This adult Turtle was found dead with no premonitory signs. The Turtle was submitted for necropsy for post-mortem examination. On gross pathology, the Turtle was in good nutritional condition and moderately dehydrated. Gross pathological examination revealed an overall hardening of the liver and the presence of large pale white-reddish tissue. There were no other significant gross findings. Impression smears and histopathology of the liver parenchyma were performed. From fresh liver tissue samples microbiological, mycological and PCR assays were negative for bacterial, fungal, Herpesvirus and Adenovirus infection.



Figure 1 –Scorpion Mud Turtle (*Kinosternon scorpioides*), female, 20-year-old. Liver, gross image.

Cytological and Histological images:

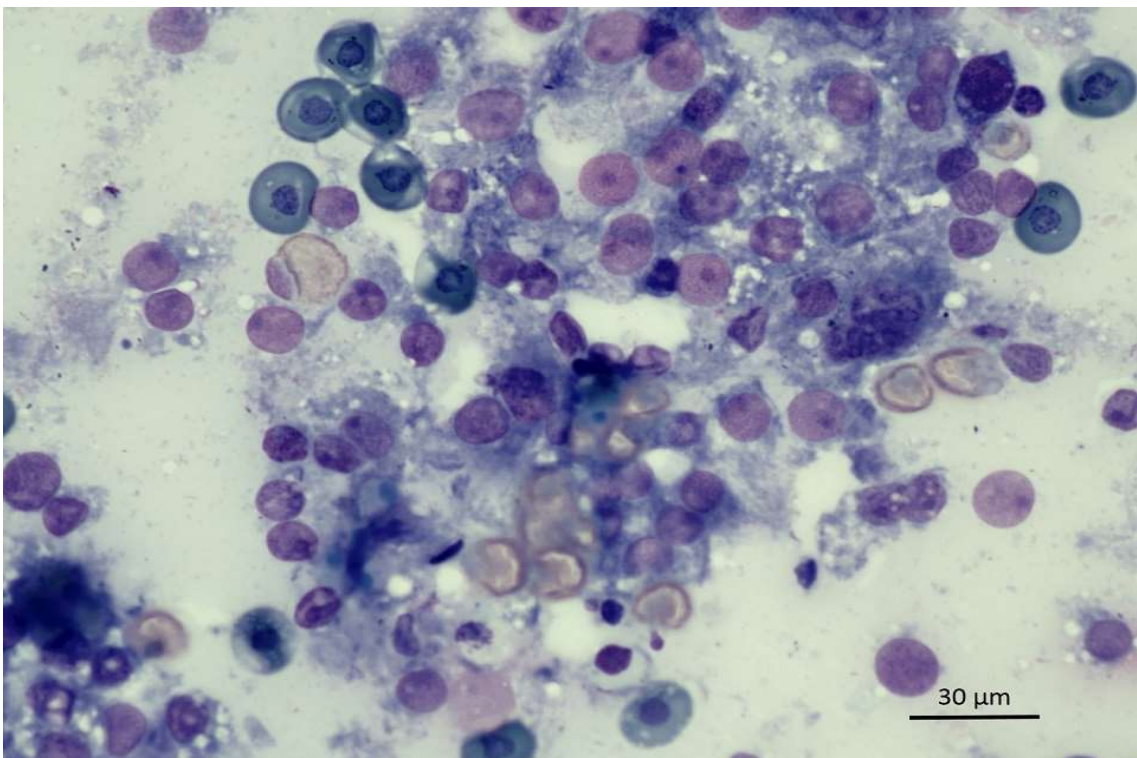


Figure 2 – Scorpion Mud Turtle (*Kinosternon scorpioides*), female, 20-year-old. Liver, impression smear, May Grünwald-Giemsa (MGG) stain, bar=30 µm.

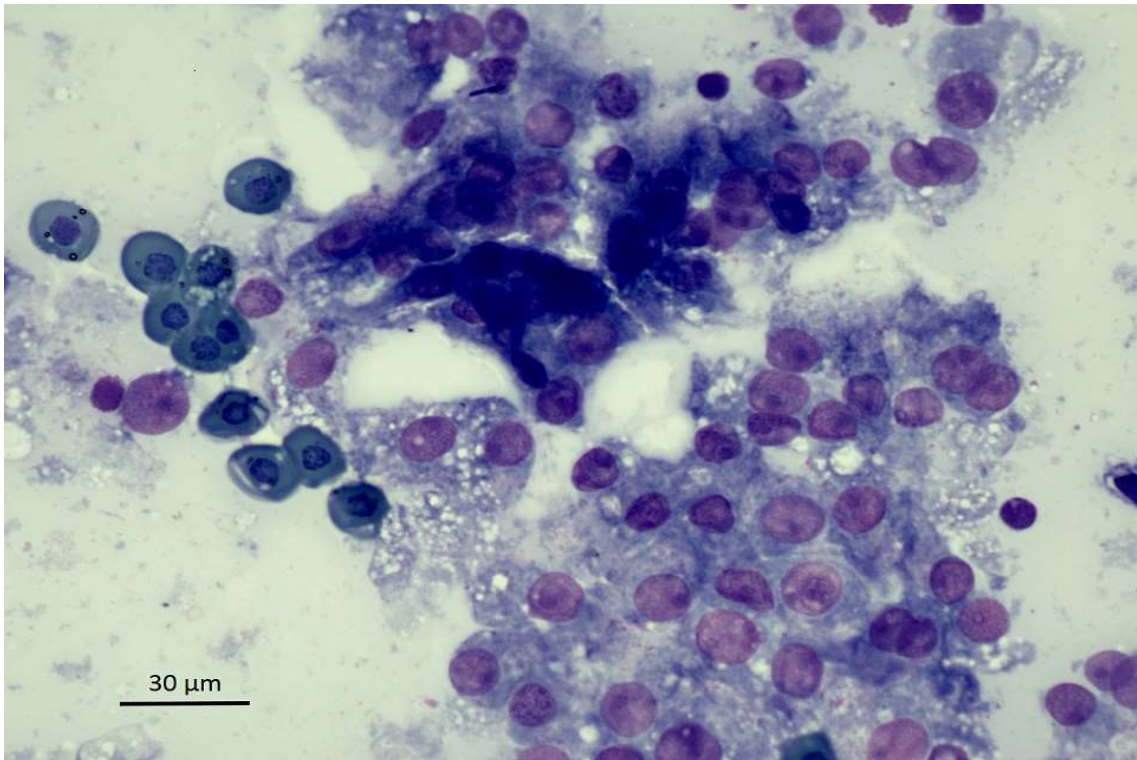


Figure 3 – Scorpion Mud Turtle (*Kinosternon scorpioides*), female 20-year-old. Liver, impression smear, MGG stain, bar=30 μm.

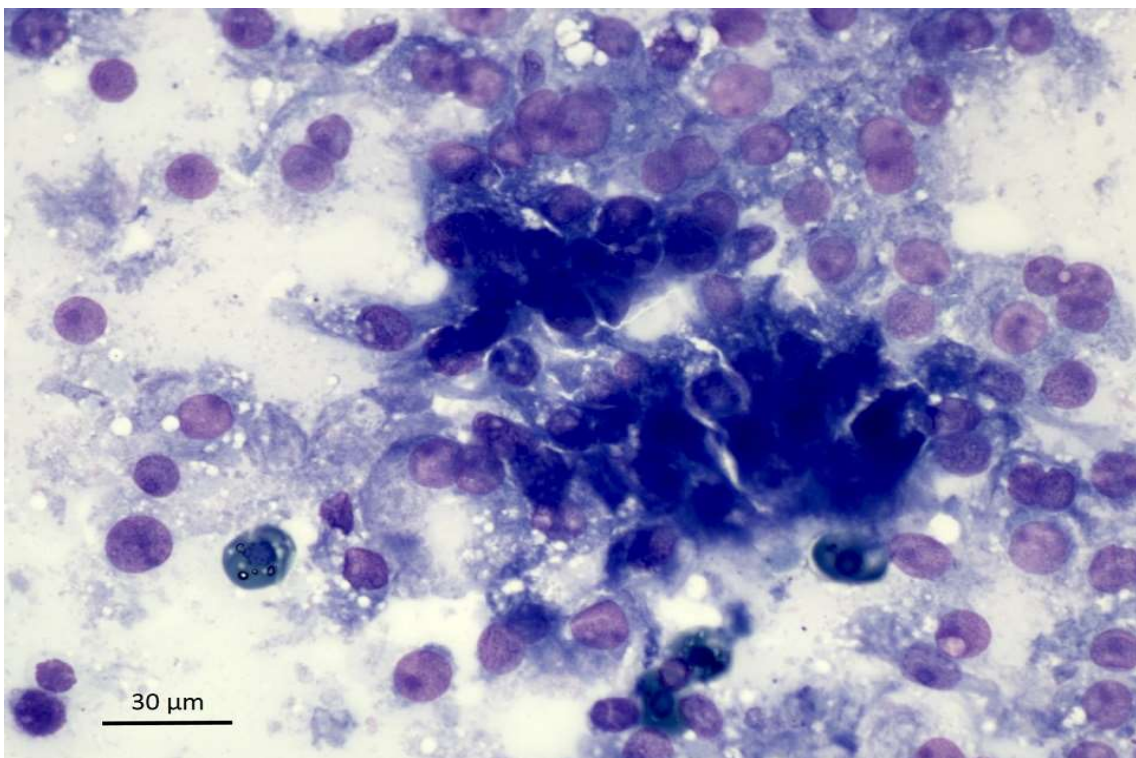


Figure 4 – Scorpion Mud Turtle (*Kinosternon scorpioides*), female, 20-year-old. Liver, impression smear, May Grünwald-Giemsa (MGG) stain, bar=30 μm.

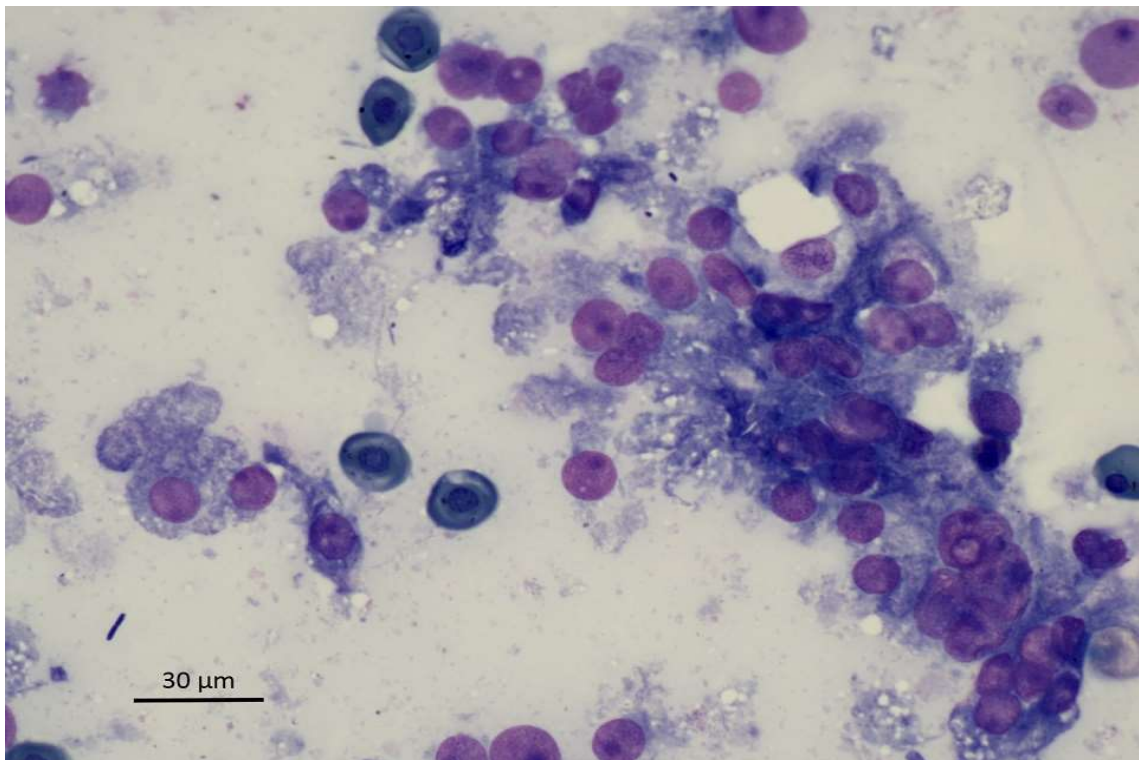


Figure 5 – Scorpion Mud Turtle (*Kinosternon scorpioides*), female, 20-year-old. Liver, impression smear. MGG stain, bar= 30 μm.

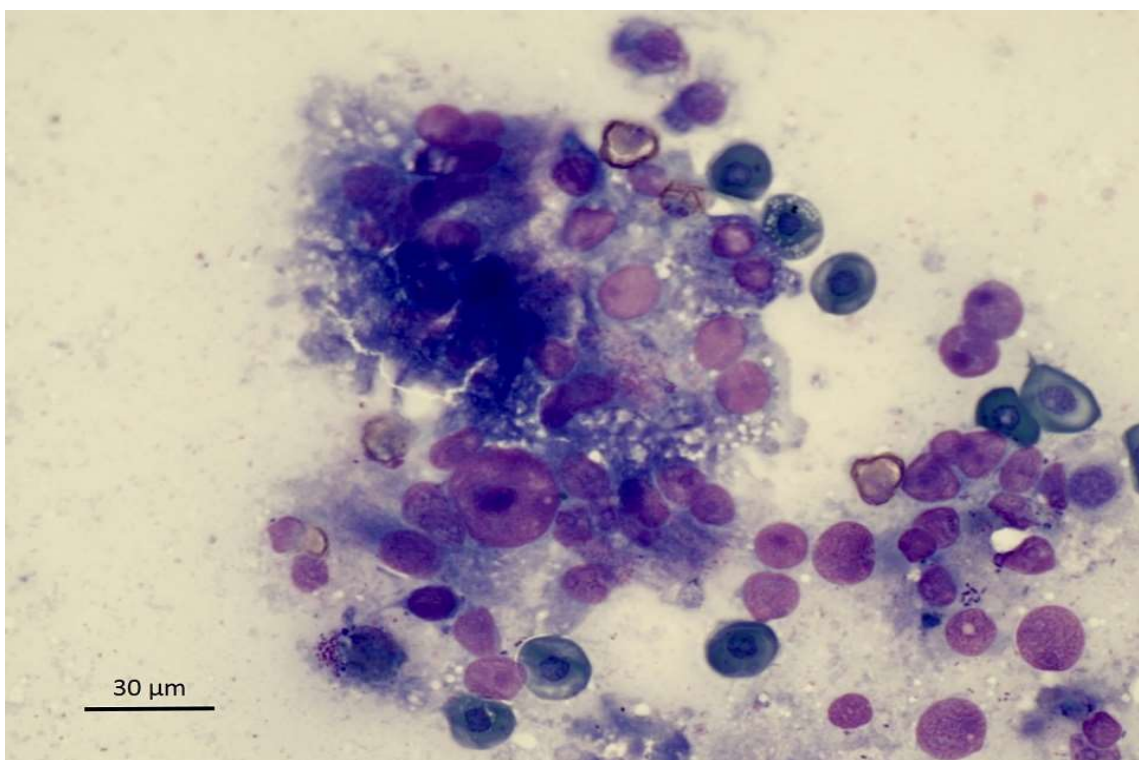


Figure 6 – Scorpion Mud Turtle (*Kinosternon scorpioides*), female, 20-year-old. Liver, impression smear. MGG stain, bar= 30 μm.

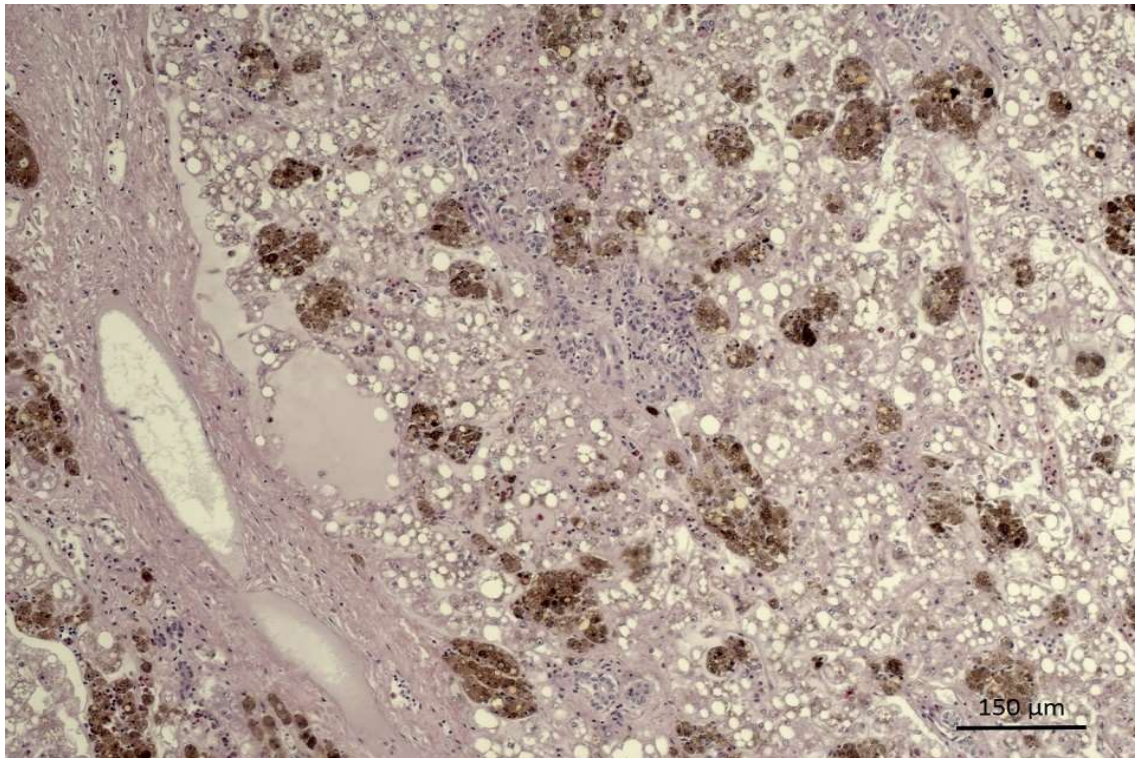


Figure 7 – Scorpion Mud Turtle (*Kinosternon scorpioides*), female, 20-year-old. Hepatic lesion, Hematoxylin and eosin (H&E) stain, bar= 150 μm.

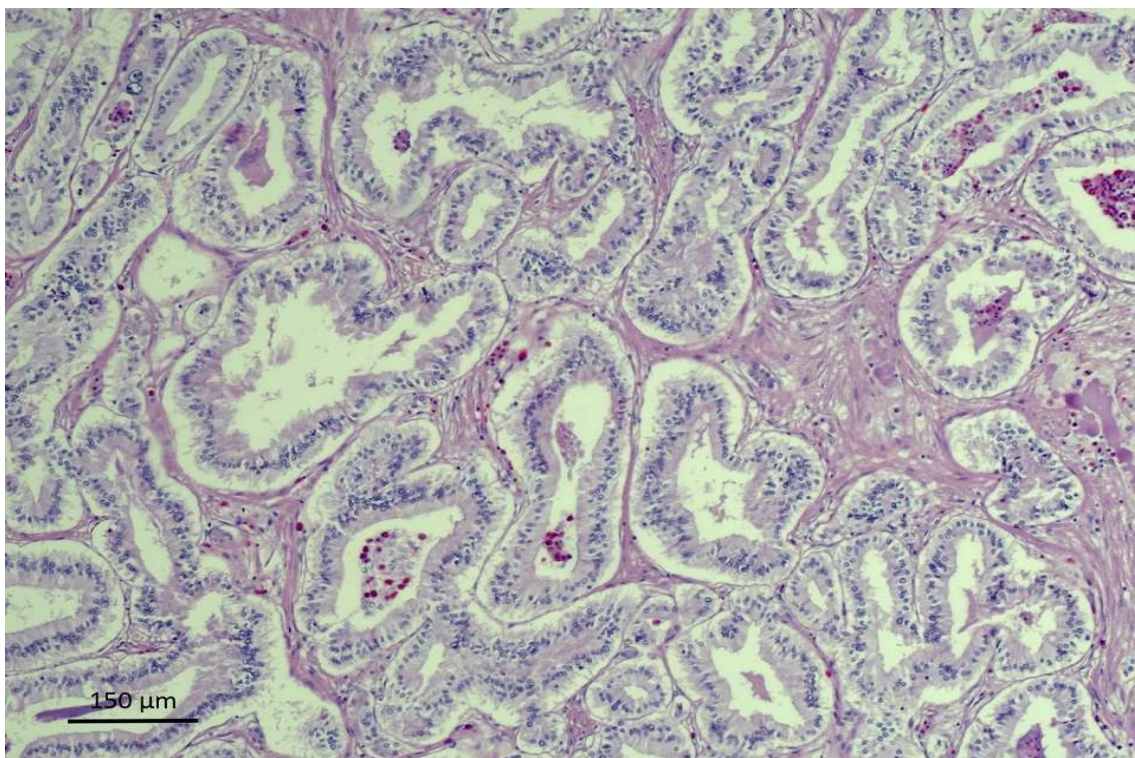


Figure 8 – Scorpion Mud Turtle (*Kinosternon scorpioides*), female, 20-year-old. Hepatic lesion, H&E stain, bar= 150 μm.

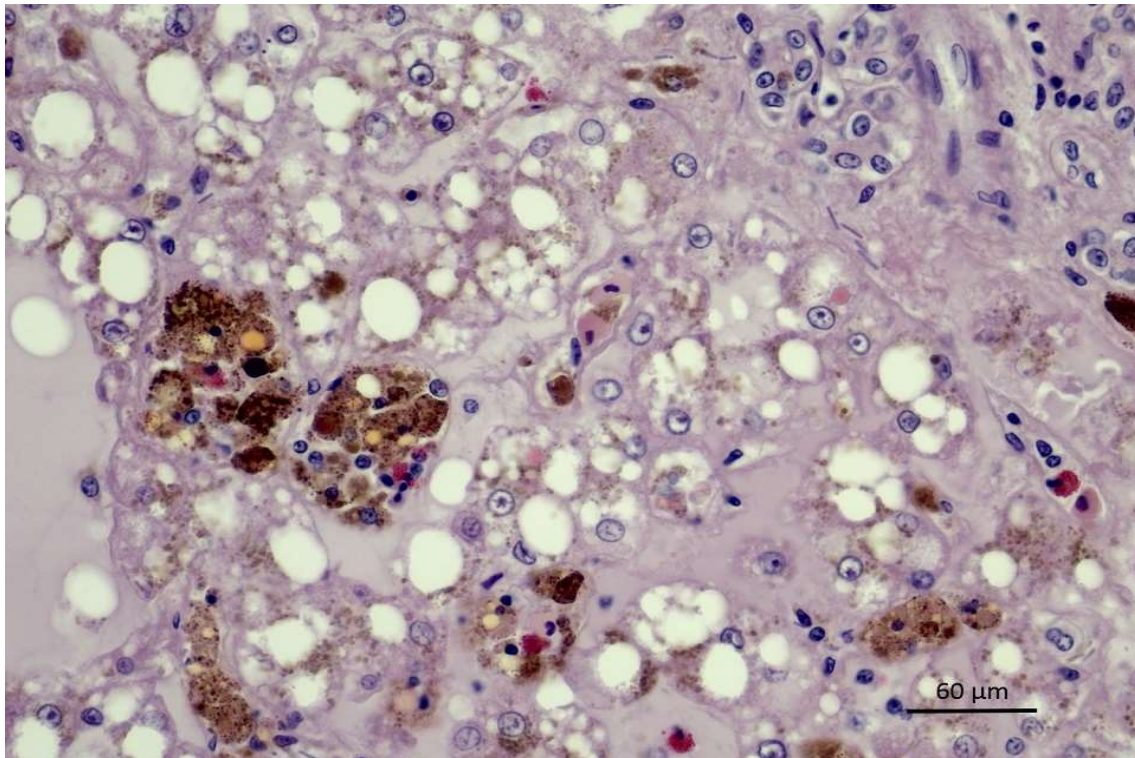


Figure 9 – Scorpion Mud Turtle (*Kinosternon scorpioides*), female, 20-year-old. Hepatic lesion, H&E stain, bar= 60 μm.

Questions:

1. How could you describe the cytological and histological findings?
2. What is your interpretation of the cytological and histological findings?
3. What are the possible differential diagnoses?