

## **ESVCP Case Presentation**

### **Harold Tvedten DVM PhD**

Swedish University of Agricultural Sciences  
UDS Box 7038 SE-750 07 Uppsala Sweden  
[Harold.Tvedten@slu.se](mailto:Harold.Tvedten@slu.se)

### **Lena Jansson DVM**

Anicura Värmdä Djurklinik

**SPECIMEN:** Aspirate from a 3.5 cm structure (thought to be an enlarged salivary gland) in the throat of a dog.

**SIGNALMENT:** A 6-year-old, male Gonczy Polski (Polish hunting dog).

### **HISTORY AND CLINICAL FINDINGS:**

The dog came to Sweden from Poland three years earlier. There were no clinical signs. CRP was normal.

### **Cytological findings:**

See photomicrographs.

### **Questions**

1. What is the cytological diagnosis?
  - a. Abscess
  - b. Pyogranuoma
  - c. Granuloma
  - d. Squamous cell carcinoma
  - c. Salivary gland adenoma
  
2. What is/are the organisms in the sample?
  - a. Yeast
  - b. Amoeba
  - c. Algae
  - d. Protozoa
  - c. No organisms are seen.

Figure 1  
Photomicrograph of a May Grunwald Giemsa stained smear of a FNA the structure. Use erythrocytes (about 6  $\mu\text{m}$ ) for size comparison.

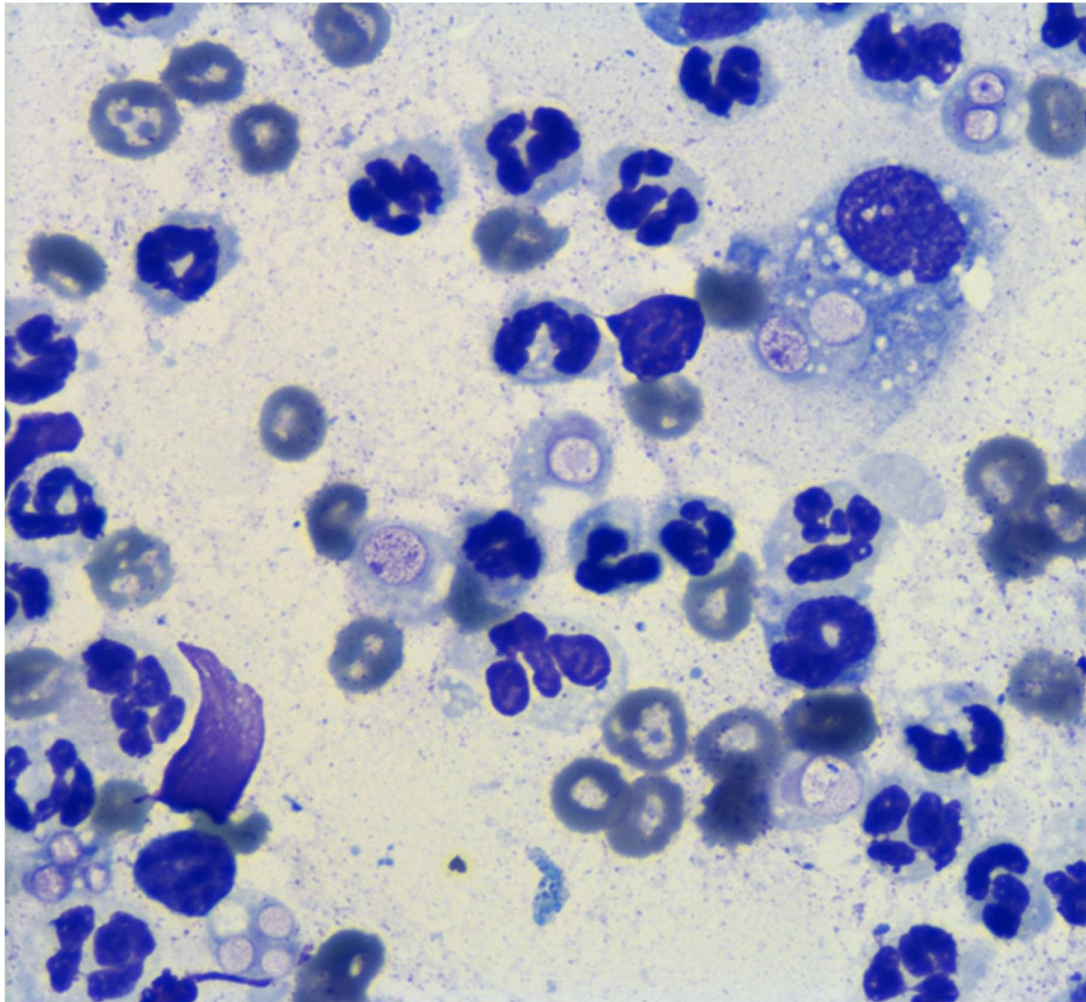


Figure 2

Photomicrograph of a May Grunwald Giemsa stained smear of a FNA the structure. Use erythrocytes (about 6  $\mu\text{m}$ ) for size comparison.

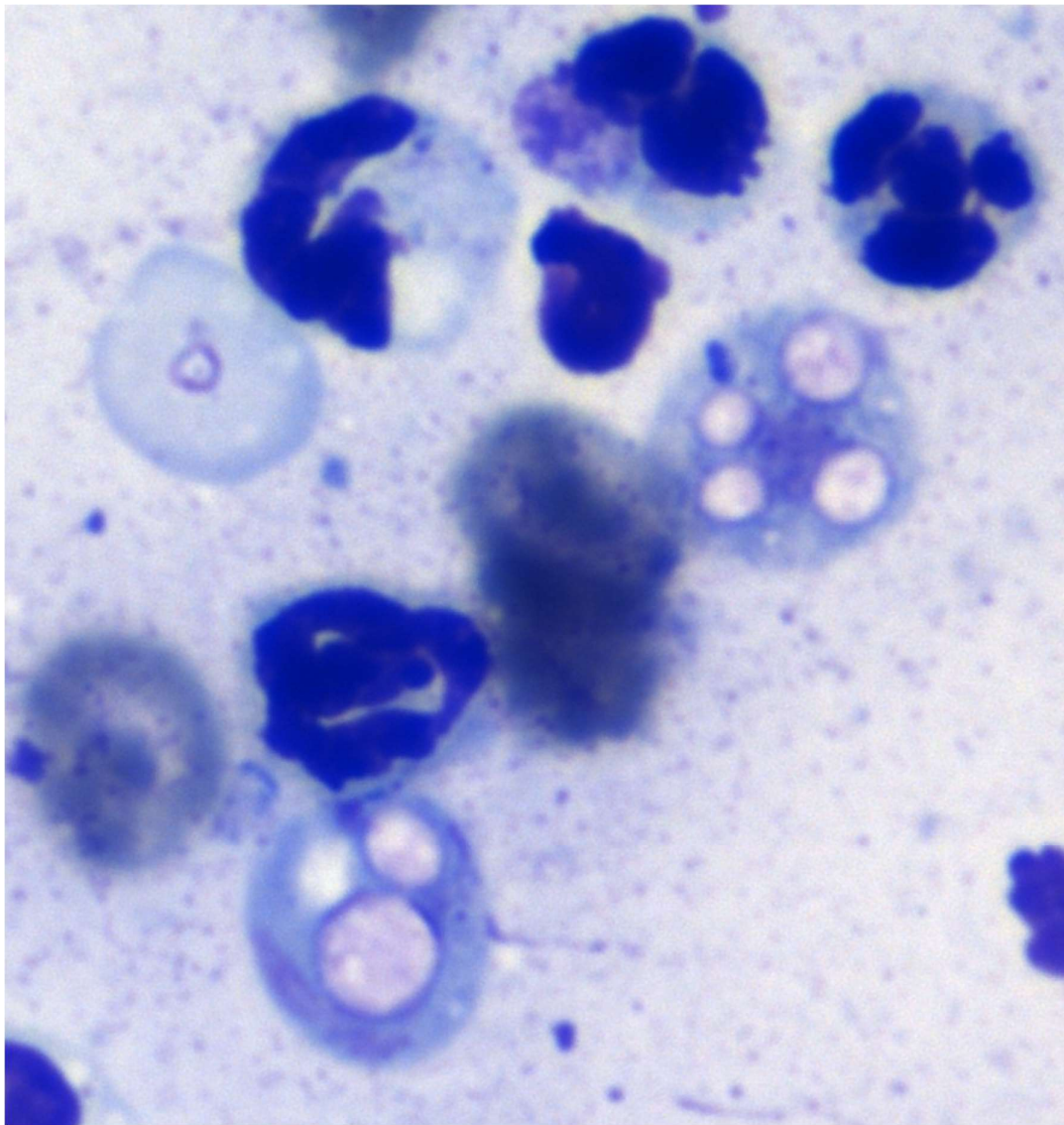


Figure  
Photomicrograph of a May Grunwald Giemsa stained smear of a FNA the structure. Use erythrocytes (about 6  $\mu\text{m}$ ) for size comparison.

