

### Case Description (without diagnosis)

Submitter Laura Brandt and Harold Tvedten  
Employer Gribbles Veterinary  
35 O'Rorke Road  
PO Box 12049  
Penrose, Auckland New Zealand 1642  
Phone 64 9 5744709  
Fax 64 7 8500770  
E-mail laura.brant@gribbles.co.nz

Specimen: History, laboratory data, photos of blood smear and of EDTA blood from another cow with the same problem.

### Signalment:

The Gribbles Veterinary laboratory in Hamilton New Zealand received an EDTA blood sample from a dairy cow with a specific request to look for this disease.

Table 1

| Test (March 21, 2014) | Patient | Reference Values |
|-----------------------|---------|------------------|
| Hematocrit            | 12 %    | 24-36            |
| Hemoglobin            | 40 g/L  | 85-130           |

### Questions

1. What caused the anemia?
2. How common is this disease?
3. What is the most diagnostic test?

Figure 1 Blood smear Giemsa stained original magnification 1000x.

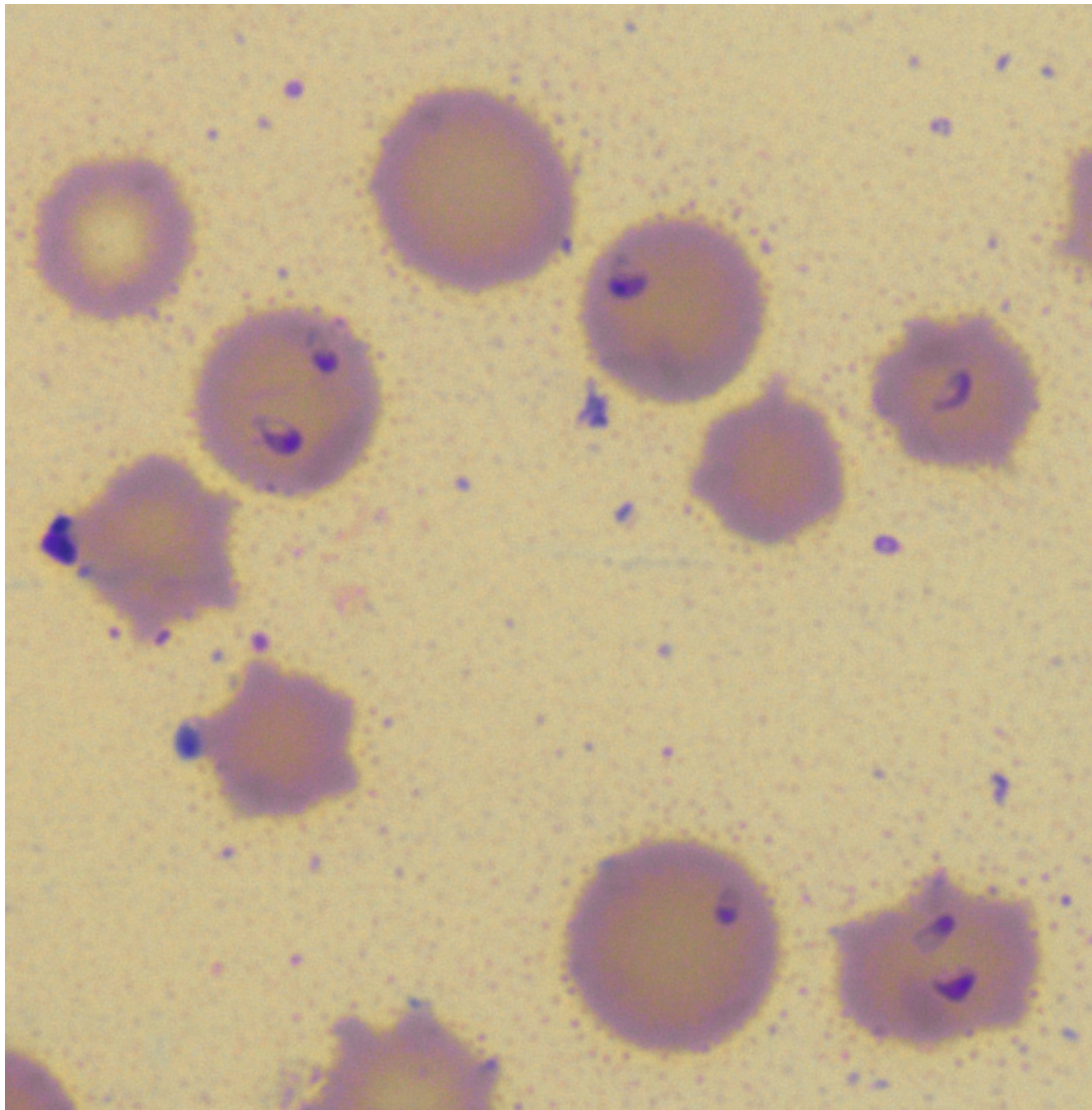


Figure 2 EDTA blood from a similar case in another cow.

