

A DOG WITH NODULAR LINGUAL LESIONS

Ioannis L. Oikonomidis^{1*}, Melpomeni K. Tangalidi², Dimitra Psalla³, Serafim Papadimitriou², Maria Kritsepi-Konstantinou¹, Mathios E. Mylonakis²

¹Diagnostic Laboratory, School of Veterinary Medicine, Faculty of Health Sciences, Aristotle University of Thessaloniki, Thessaloniki, Greece

²Clinic of Companion Animal Medicine, School of Veterinary Medicine, Faculty of Health Sciences, Aristotle University of Thessaloniki, Thessaloniki, Greece

³Laboratory of Pathology, School of Veterinary Medicine, Faculty of Health Sciences, Aristotle University of Thessaloniki, Thessaloniki, Greece

*Corresponding author: Email address: ekonomidis.john@gmail.com

CASE PRESENTATION

Specimen: Giemsa-stained scrape smear of a nodular lingual lesion.

Signalment: Dog, Rottweiler, 5.5-year-old, intact male, 50 kg.

History/presenting complaint: Outdoors lifestyle, update with vaccinations and deworming. Progressively worsening multifocal, lingual lesions for over 1 year.

Clinical signs: Multiple reddish, crater-like nodules on the tongue (Figure 1).



Figure 1

Hematology: Eosinophilia (2,050/ μ l, reference intervals: 0-600/ μ l), confirmed with manual differential white blood cell count.

Serum biochemistry: Unremarkable.

Task: Evaluate and interpret the cytology images (Figure 2 and 3).

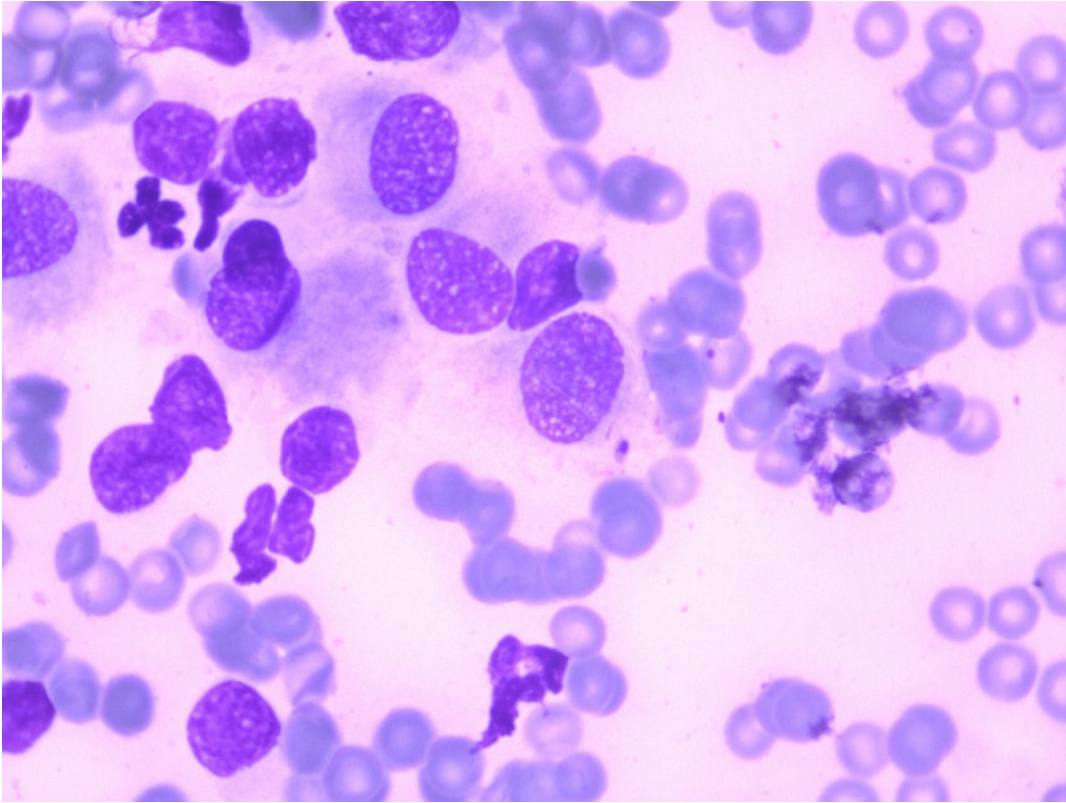


Figure 2 (100x objective)

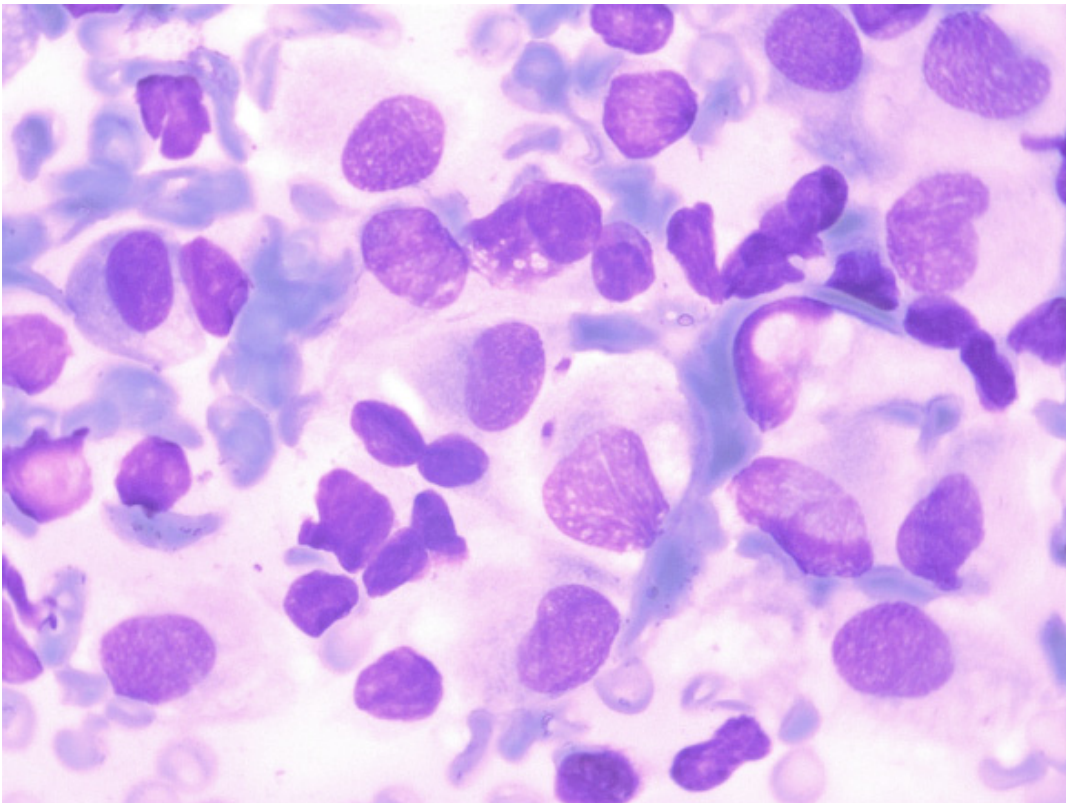


Figure 3 (100x objective)