

## HEPATIC MASS IN A FLAT COAT RETRIEVER

Anne Leuschner<sup>1</sup>, Philippa J McLaren<sup>1</sup>, Chris Scudder<sup>2</sup>, Kate English<sup>1</sup>

<sup>1</sup>Department of Pathology and Pathogen Biology, <sup>2</sup> Department of Clinical Sciences and Services, The Royal Veterinary College, United Kingdom

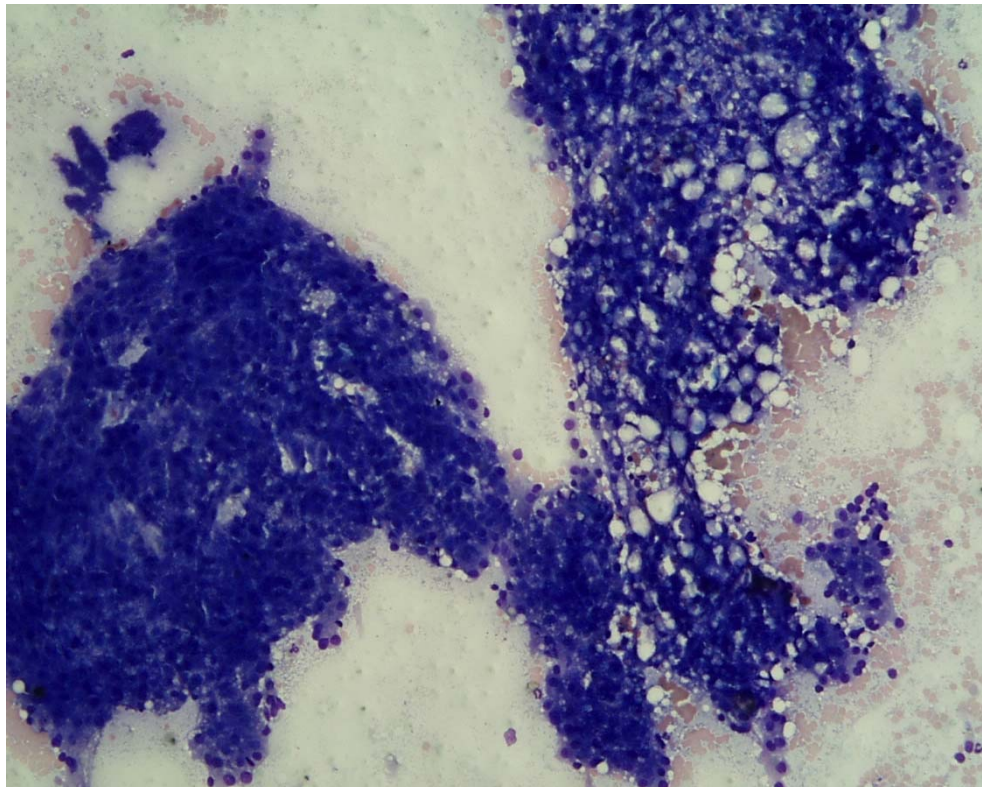
### Case presentation:

A 10 year old female neutered Flat Coat Retriever was presented to the Queen Mother Hospital for Animals, Royal Veterinary College, UK with a recent history of intermittent short episodes of weakness after exercise, lethargy and weight loss.

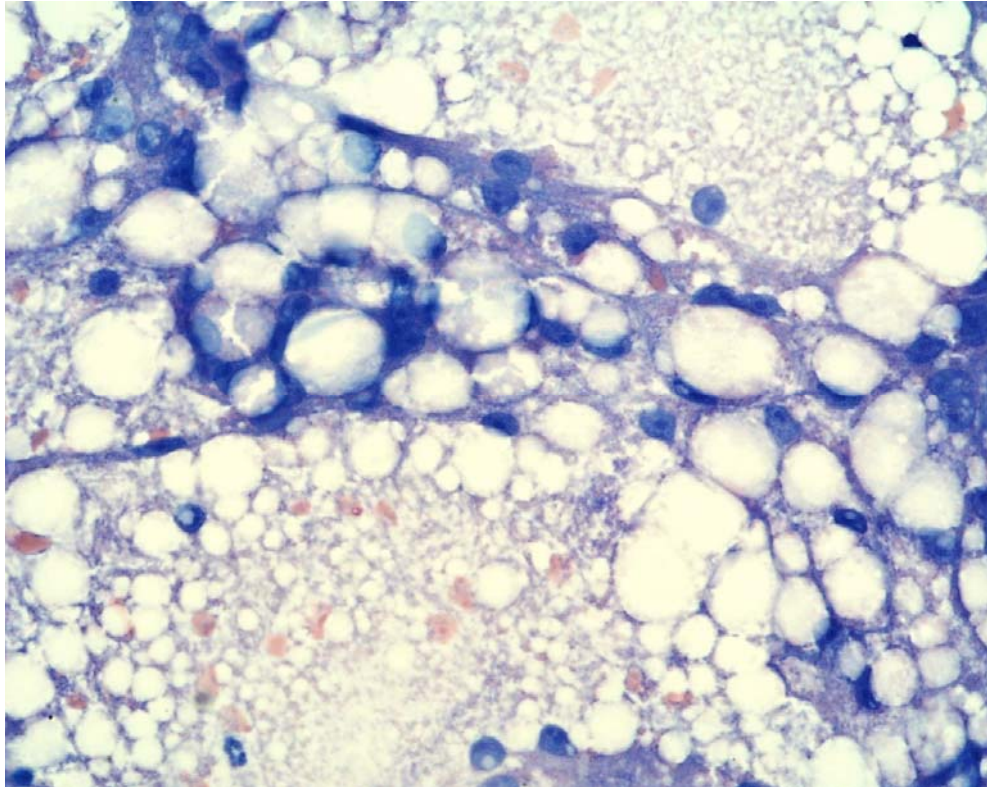
Biochemistry revealed moderate ALT elevation (338 U/L, reference interval [RI] 13-88) and marked ALP elevation (3470 U/L, RI 19-285), mild hypercholesterolemia (10.8  $\mu\text{mol/L}$ , RI 3.3-8.9) and mild increase of urea (12.2 mmol/L, RI 3.0-9.1) with creatinine within RI. Haematology revealed mild lymphopenia only and blood smear examination was unremarkable.

Imaging identified a mass within the right side of the liver, which appeared iso- to hypoechoic on ultrasound and mixed attenuating with contrast enhancement on computed tomography (CT). The size of the mass was determined to be approximately 8x11 cm, occupying the right medial and lateral liver lobes with possible involvement of the caudate lobe.

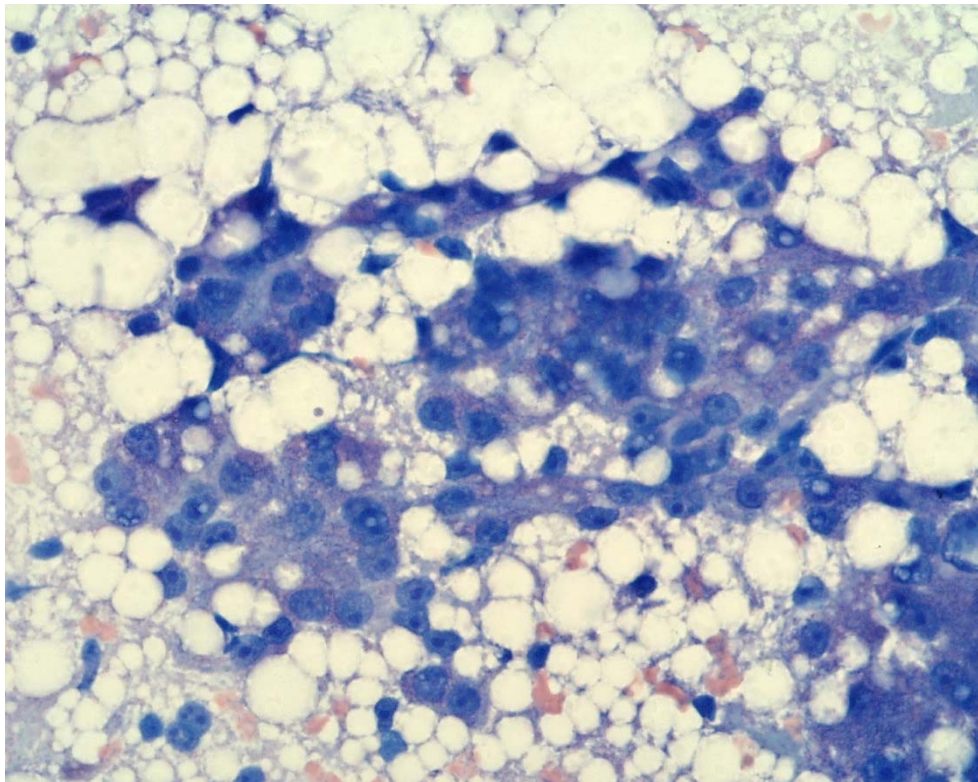
Fine-needle aspirates were obtained from the hepatic mass and submitted for cytologic evaluation (Figures 1 to 4).



**Figure 1:** FNA from hepatic mass (100x Magnification, Modified Wright's)

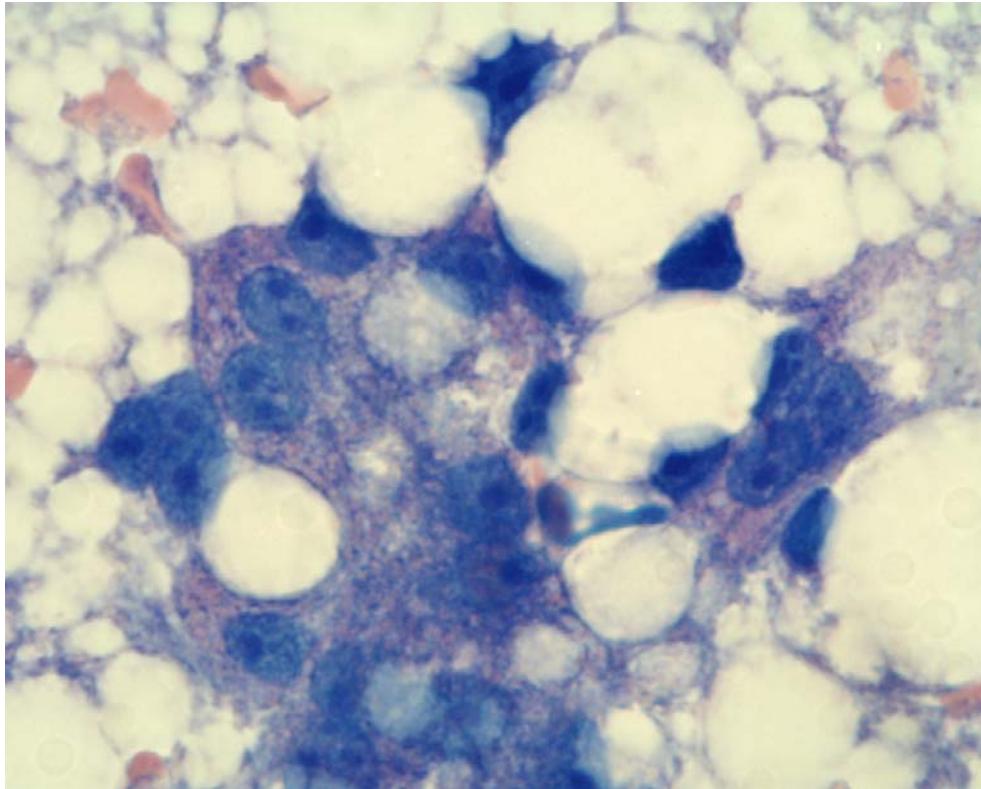


**Figure 2:** FNA from hepatic mass (400x Magnification, Modified Wright's)



**Figure 3:** FNA from hepatic mass (400x Magnification, Modified Wright's)





**Figure 4:** FNA from hepatic mass (1000x Magnification, Modified Wright's)

Question/Task

Describe and interpret the cytologic findings.